



# Abroad Research Internship Opportunities

at National Central University, Taiwan



# VDO Clip + NCU Clip

<https://www.youtube.com/watch?v=wBtKkxKtOZQ>

<https://www.youtube.com/watch?v=0YiCjMUGI60>



# Explore Global Opportunities



# 中央大學 校園導覽圖

## 國立 中央大學

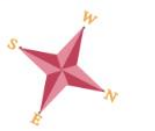
- 汽車停車場 Vehicle Parking
- 機車停車場 Motorcycle Parking
- 公車站 Bus Stop
- 校園共享服務車站 OLOO-Encounter Stations
- 自動繳費機 AutoPay Station
- 餐廳 Restaurant
- 郵局 Post Office
- 商店 Store
- 洗手間 Toilet
- 緊急電話 Emergency Call Box
- YouBike站 YouBike
- 自動體外心臟電擊器 Automated External Defibrillator

往中環-新屋  
To Zhong-Li, Xin-Wu

往夜街  
To Late-Night Snacks Lane

往中環-中high  
To Zhong-Li, National Hwy N1

往觀音-桃園車站  
To Guanyin, High-Speed Rail Taoyuan Station



### 便捷指引 Walking & Biking

- 1 教務處 Office of Physical Affairs
- 2 教學研究綜合大樓 Teaching & Research Building
- 3 體育館 Gymnasium
- 4 體育學系 School of Physical Education
- 5 體育學系(體育學) School of Physical Education (Physical Education)
- 6 體育學系(體育學) School of Physical Education (Physical Education)
- 7 體育學系(體育學) School of Physical Education (Physical Education)
- 8 體育學系(體育學) School of Physical Education (Physical Education)
- 9 體育學系(體育學) School of Physical Education (Physical Education)
- 10 體育學系(體育學) School of Physical Education (Physical Education)

- 11 體育學系(體育學) School of Physical Education (Physical Education)
- 12 體育學系(體育學) School of Physical Education (Physical Education)
- 13 體育學系(體育學) School of Physical Education (Physical Education)
- 14 體育學系(體育學) School of Physical Education (Physical Education)
- 15 體育學系(體育學) School of Physical Education (Physical Education)
- 16 體育學系(體育學) School of Physical Education (Physical Education)
- 17 體育學系(體育學) School of Physical Education (Physical Education)
- 18 體育學系(體育學) School of Physical Education (Physical Education)
- 19 體育學系(體育學) School of Physical Education (Physical Education)
- 20 體育學系(體育學) School of Physical Education (Physical Education)

### 休閒生活 Sport & Recreates

- 1 足球場 Soccer Field
- 2 網球場 Tennis Court
- 3 網球場 Tennis Court
- 4 網球場 Tennis Court
- 5 網球場 Tennis Court
- 6 網球場 Tennis Court
- 7 網球場 Tennis Court
- 8 網球場 Tennis Court
- 9 網球場 Tennis Court
- 10 網球場 Tennis Court

### 其他單位 Other Units

- 1 大門警衛室 Front Gate Security Room
- 2 後門警衛室 Rear Entrance Security Room
- 3 大門警衛室 Front Gate Security Room
- 4 後門警衛室 Rear Entrance Security Room
- 5 大門警衛室 Front Gate Security Room
- 6 後門警衛室 Rear Entrance Security Room
- 7 大門警衛室 Front Gate Security Room
- 8 後門警衛室 Rear Entrance Security Room
- 9 大門警衛室 Front Gate Security Room
- 10 後門警衛室 Rear Entrance Security Room

### 行政服務 Administration & Services

- 1 行政大樓 Administration Building
- 2 網球會館 Tennis Club
- 3 網球會館 Tennis Club
- 4 網球會館 Tennis Club
- 5 網球會館 Tennis Club
- 6 網球會館 Tennis Club
- 7 網球會館 Tennis Club
- 8 網球會館 Tennis Club
- 9 網球會館 Tennis Club
- 10 網球會館 Tennis Club

### 宿舍 Dormitory

- A1 國際學生宿舍 International Student Dormitory
- L 學生三舍 Male Dorm 3
- L 學生三舍 Male Dorm 3
- L 學生三舍 Male Dorm 3
- L 學生三舍 Male Dorm 3
- L 學生三舍 Male Dorm 3
- L 學生三舍 Male Dorm 3
- L 學生三舍 Male Dorm 3
- L 學生三舍 Male Dorm 3
- L 學生三舍 Male Dorm 3

### 教學研究 Teaching & Research

- A 文學院 Liberal Arts College
- C2 工程學院 College of Engineering
- L5 文學院 Liberal Arts College
- S1 科學學院 College of Science
- S2 科學學院 College of Science
- S3 科學學院 College of Science
- S4 科學學院 College of Science
- S5 科學學院 College of Science
- S6 科學學院 College of Science
- S7 科學學院 College of Science

- EQ 國際實驗室及品質中心 International Laboratory & Quality Assurance Center
- E4 工程學院(工程學) College of Engineering (Engineering)
- E5 工程學院(工程學) College of Engineering (Engineering)
- E6 工程學院(工程學) College of Engineering (Engineering)
- E7 工程學院(工程學) College of Engineering (Engineering)
- E8 工程學院(工程學) College of Engineering (Engineering)
- E9 工程學院(工程學) College of Engineering (Engineering)
- E10 工程學院(工程學) College of Engineering (Engineering)
- E11 工程學院(工程學) College of Engineering (Engineering)
- E12 工程學院(工程學) College of Engineering (Engineering)

NCU CAMPUS

# PROGRAM TIMELINE

## APPLICATION

NOW - 30 Jan 2025 \*\* OR until  
the quota is full

## RESULT ANNOUNCEMENT

Before 7 FEB 2025

## MUIR Scholarship

April/May 2025

<https://op.mahidol.ac.th/ir/scholarship-for-undergrad/>

## INTERVIEW

1 FEB 2025 \*\* OR until the  
quota is full

## PREPARING FOR NCU INTERNSHIP

**End of Feb 25** -Submit all documents to  
OIA NCU – waiting for VISA documents

## SUMMER INTERNSHIP

June - JULY 2025





# Professor Chih-Lin Hu

Associate Professor at National Central University (NCU)  
Department of Communication Engineering, PhD

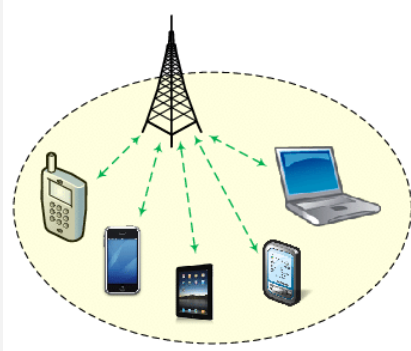
Field of expertise:

- Network Technology and Architecture
- Computer Networking
- Consumer Communications & Networking (Digital Home)
- Mobile Ad Hoc Networks
- Internet of Things

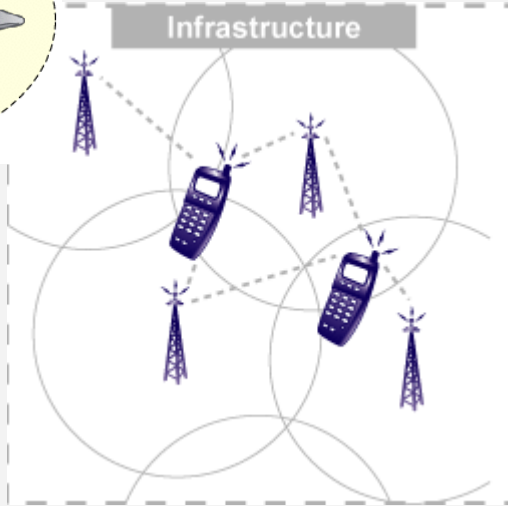
Open for **4 positions**  
Contact: Aj. Thitinan

**4**

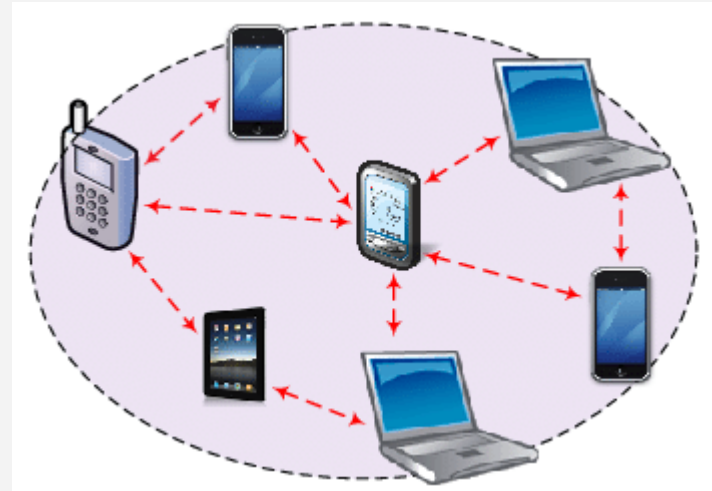
# Internet Infrastructure vs Ad Hoc Network



**Infrastructure**



**Ad Hoc**



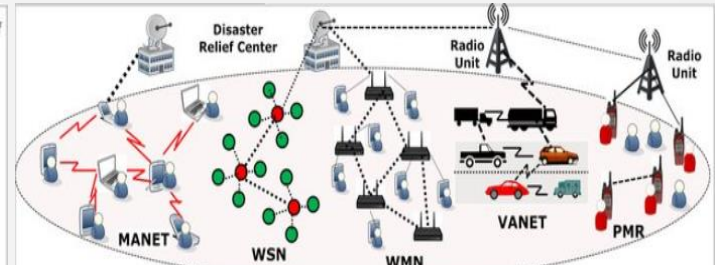
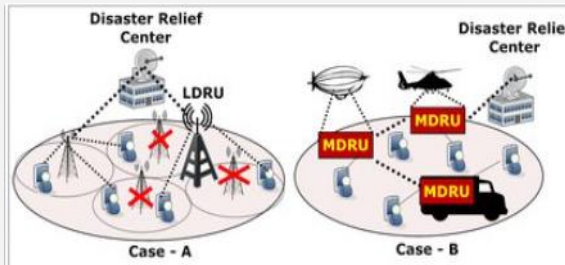
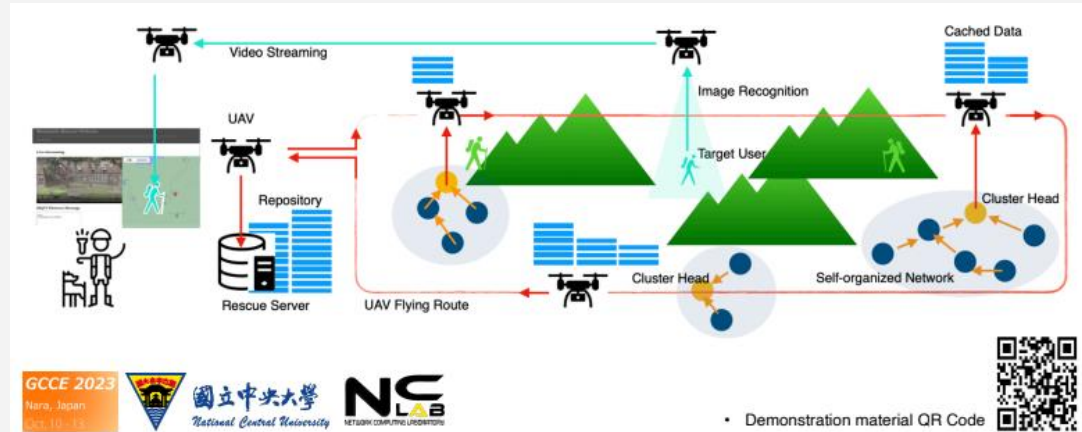
# X Applications Development over Ad Hoc Network

## Emergency Services

- Automatic Accident Notification
- SOS rescue service for disaster

## Environmental Monitoring Systems

- Forest





# Multi-Hop Data Delivery in Hybrid Self-Organized Networks for Mountain Rescue



Mul

# Predicting Road Traffic Risks



# ICT 2023 INTERNSHIP

Earthquake box



Supakitt  
Surojanakul  
(Ohm)



Thitirat  
Sukijprasert  
(Eff)

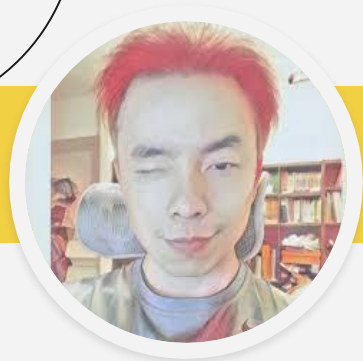


**READ MORE**

# ICT 2024 INTERNSHIP

## Gas Leakage System





# Professor Ying-Nong Chen

Associate Professor at National Central University (NCU)  
Computer Science and Information Engineering, PhD  
Lab name: Pattern Recognition

Our Research Topics:

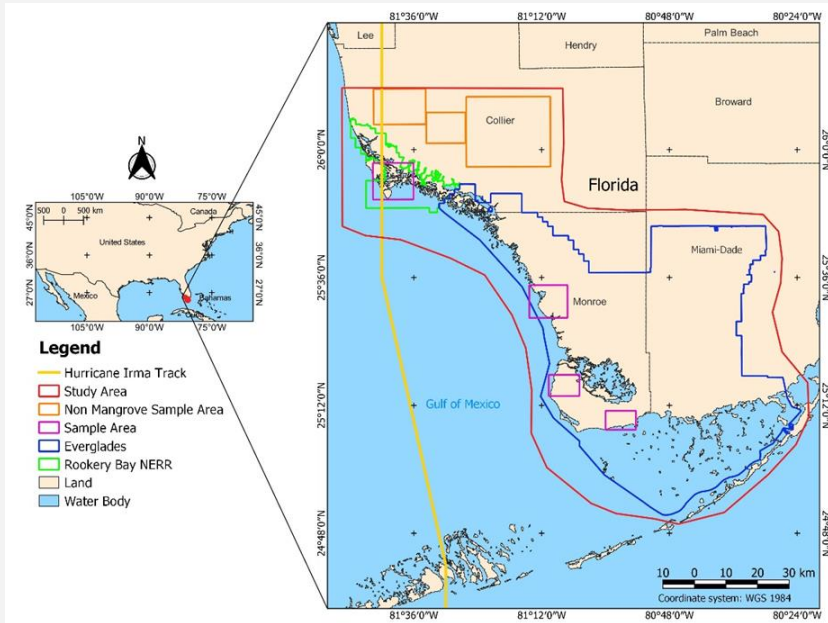
1. Rainfall estimate based on satellite images
2. Mangrove mapping and analysis based on satellite images
3. Land Cover and Land Usage (LC/LU) analysis based on satellite images
4. Computer Vision ( Face Expression, Few Shot learning )

# 3

Open for **3 positions** Contact: Aj. Tipajin (The project is on the next page)

1. Jakkrit (Theme: Medical Image to Personalized Report) Status: Accepted \*Senior project

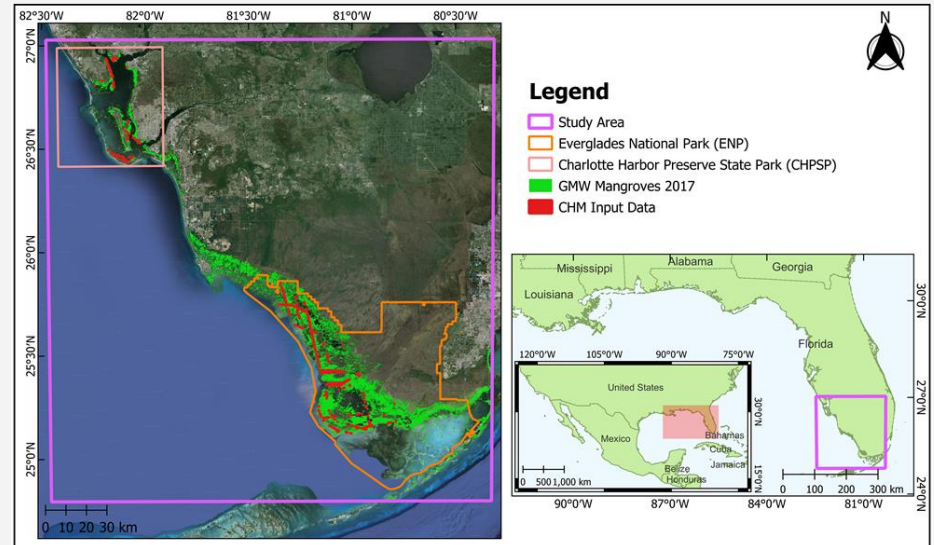
# Mangrove Detection and Mangrove Canopy Height Estimation Project



- Mangroves are among the most carbon-rich forests and one of the blue-carbon ecosystems. Mangrove detection and mangrove canopy height are crucial parameters for estimating above-ground biomass.
- In this project, students will join to implement a spatial-spectral-temporal transformer deep learning model based on satellite images to achieve the above goals of mangrove detection and canopy height estimation.

Figure 1: Study area of Mangrove detection. (Florida)

Figure 2: Study area of mangrove canopy height estimation. (Florida)





# Professor Min-Te-Sun

Professor and Chairman for Department of Computer Science and Information Engineering  
Artificial Intelligence & Pattern Recognition Lab

## **Research Expertise**

Mobile network, wireless communication network, algorithm design and analysis

**Our Intern Topics:** Web-based/Mobile Application

Open for **2 positions** Contact: Aj. Tipajin (Full)

1. Phanthira Phansen 6588069
2. Wasuntha Phanpanich 6588068

# WHO CAN APPLY?





# How to live in NCU@TAIWAN

<https://drive.google.com/file/d/1K1SObvivZNcmScmJisZtRCh8V0U9TZw9/view?usp=sharing>

<https://drive.google.com/file/d/1V-woTgv53NQbtSv2Tc-xVLb9JFLiaw1/view?usp=sharing>

# Q&A

Ask Us Anything!

# HOW TO APPLY?

## FILL OUT THE APPLICATION FORM

Required documents

1

A copy of  
grade report

2

CV

3

English Proficiency  
score

